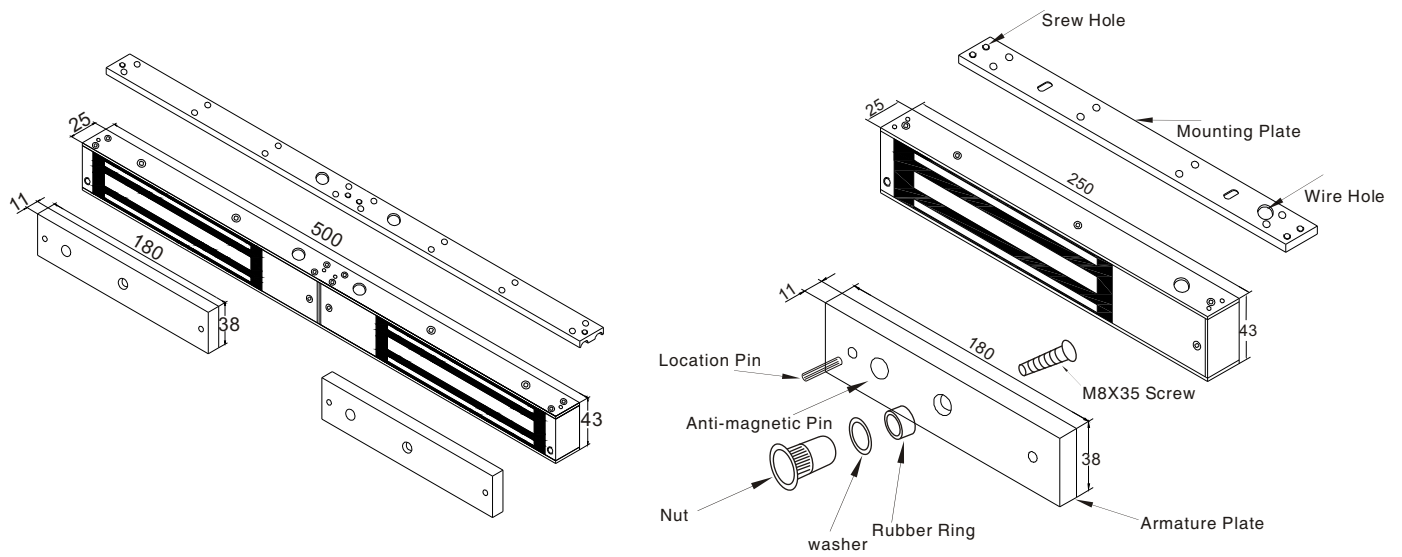


Diagram(unit:mm)



Remark:

A: Please Don't Fix The Screw(screw of Armature Plate) Tightly,
Let The Rubber Ring Maintain Proper Elasticity.

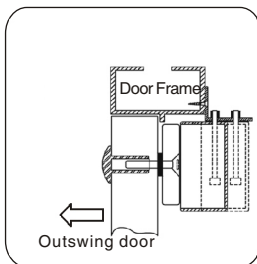
B: Please Check The Jumper Position, to Know Voltage is 12VDC or 24VDC.

Bracket Installation

Different brackets are available according to different types of doors. For example, narrow door, frameless glass door and inward opening door.

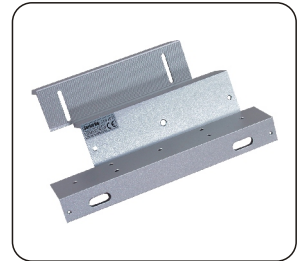
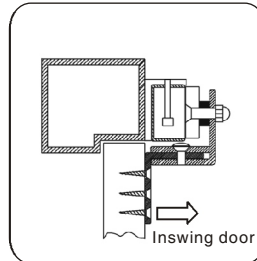
L Bracket

When the door frame thickness is less than 42mm, need to install the L bracket.



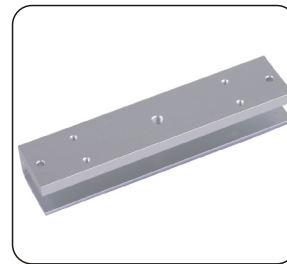
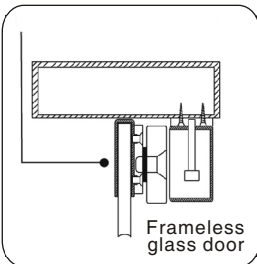
ZL Bracket

For inward opening door, need to install the ZL bracket.



U Bracket

For the frameless glass door, need to install the UL bracket.
(suitable for 10-15mm glassdoor).



Circuit Board Diagram

A. 12VDC Input:

Required power 0.5Amp(Minimum).

Connect the positive(+)lead from a 12VDC power source to V +.

Connect the ground(-)lead from a 12VDC power source to V -.

Check jumper for 12 VDC operation.

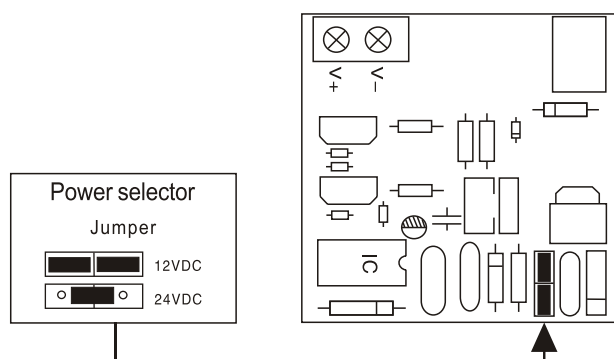
B. 24VDC Input:

Required power 0.25Amp(Minimum).

Connect the positive(+)lead from a 24VDC power source to V +.

Connect the ground(-)lead from a 24VDC power source to V -.

Check jumper for 24 VDC operation.



YM-280

Wire Connection

